



Groups News, August 2025

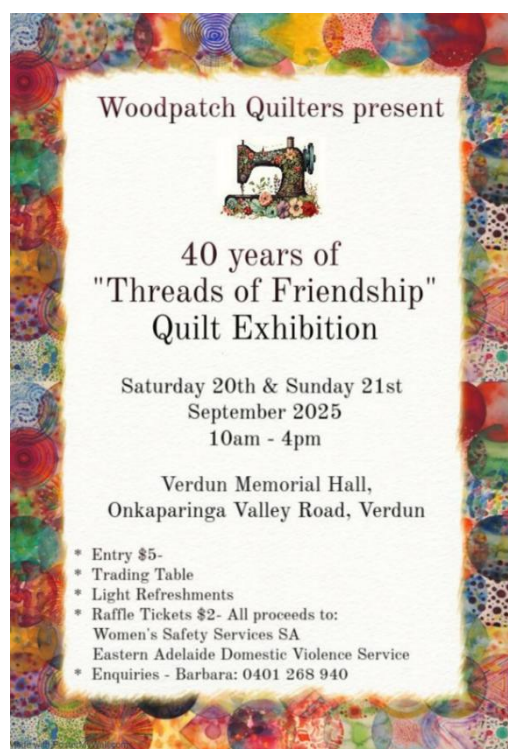
First, I must apologise for the lateness in sending out this newsletter. I could almost write a newsletter on all the reasons why it is late! But it is here, in a new format, which is part of the reason why it is late!

I would like to congratulate and thank everyone who entered FoQ this year, especially all the country group members who literally had to go the extra mile or two to get their quilts in and picked up. One of our first time entrants from a country group entered five quilts and won four prizes. I personally thought it was an amazing exhibition of quilting, and all of your contributions made it so. This year there was also a number of quilts that were 'display only' and they also added to the overall exhibit, proving you can participate even when your quilt isn't officially judged. I encourage everyone to start thinking and planning their entries for next year's FoQ.

Affiliated Group Exhibitions:

Please support the following affiliated Groups exhibitions:

- Woodpatch Quilters, 20th- 21st September
- Quilters Guild of Whyalla 11th _ 12th October
- Gawler Quilting Circle 11th- 12th October
- Bordertown Gum Tree Quilters 17th-19th October
- Inman Quilters 18th-19th October





INMAN QUILTERS
Are proud to present our
9th QUILT EXHIBITION

TO BE HELD AT THE INMAN VALLEY MEMORIAL HALL

1713 Inman Valley Road, Inman Valley SA 5211

Saturday 18th October 2025 – 10.00am to 4.00 pm

Sunday 19th October 2025 – 10.00am to 3.30pm

Admission \$5.00 (children free)

Refreshments available

Quilt Raffle

(Proceeds to various local charities)

(Tickets available at PennyLane Patchwork Victor Harbor, one of our members or at our exhibition)

Come and visit us on the beautiful Fleurieu Peninsula

Groups very welcome

Enquiries: Glenda Trigg 0407 713 659

Email: 2025quiltexhibition@gmail.com

GAWLER TEXTILE ART WEEKEND

Coordinated by Gawler Quilting Circle

11th & 12th October 2025

10am - 4pm Daily

*Featuring work from talented local people
in separate exhibitions.*

Gawler Quilting Circle Exhibition “*Bush Beauty*”

Including Textile Group: Inspired by Plonk.

**Shops: The Quilting Room, Quilters Quarters,
The Stitch Saloon & Yvonne Marrin**

Hewett Community Centre - Kingfisher Drive, Hewett

SACWA & Embroiderers Guild

29 Tod Street Gawler CWA Hall

Zion Quilters: “*Our Quilting Journey*”

Zion Lutheran Hall - 22B Cowan Street, Gawler

Shop: Cynthia’s Ark

Exhibitions will have a small entrance fee

Refreshments available in some
venues and at local businesses

**Wheelchair access
at all venues**



The SAQ Judging Team would love to be invited to judge these exhibitions either as a training exercise with no results announced or as a judged exhibition. Contact Jill Christian, Judging Team Leader, for more details: saquiltersjudgingpanel@gmail.com

Raffle quilts at SA Quilters meetings

Groups are invited to bring their raffle quilts to SA Quilters Monthly Members meetings by booking a spot through Denise Johnston: denisejohnston@gmail.com. This is an opportunity for groups to promote the event their raffle quilt is for and to tell us about their group and its activities by giving a small talk on the night. Please be aware that you might not sell many tickets as we are finding ticket sales are on the decline, some groups as low as 15 tickets on the night, but are happy to offer groups the opportunity to introduce themselves, have flyers available and promote their event in person.

Other groups news:

Port Elliott Quilters are having a Biggest Morning Tea event on 23rd September which everyone is invited to.

Community Quilt Liaison position

A couple of our groups have a formal connection with hospital and community groups to provide quilts and sewn projects, and we have members to coordinate the deliveries of quilts to the children wards at some of the major hospitals. At the

Port Elliot Patchworkers
Biggest Morning Tea
Tuesday, 23 September 2025 from 10.00am
Port Elliot Institute, The Strand, Port Elliot

Morning Tea, Raffles, Prizes,
PennyLane Patchwork

Proceeds from the day will be donated to the
Fleurieu Cancer Support Foundation

Guest Speaker
Rosanne Fuller
President, SA Quilters

Admission: \$10 per head
which includes morning tea
Cash only please

RSVP to Secretary by
Monday, 8 September on
0411 574 485 or
rosemarievasiliuk@gmail.com

moment SAQ doesn't have a program or contact for adult community links, and we have had a request come through from the Flinders Private Hospital end of life care program. If you or your group would like to take on the role of supporting this program or to coordinate the delivery of quilts to adult programs I would love to hear from you, (it would also help me and others to move on some of the quilts we have made).

Country Forum is opening to all groups.

There is still plenty of room for attendees at Country Forum this year, so we are opening it up to the City Groups as well. All Group contacts will be getting an email soon with all the details, if you are interested in coming ask your contact to register you.



SA Quilters invites Country Group Members to

Country Forum 2025

"Spring into Stitching!"

Saturday, 25th October 2025.

Adelaide West Uniting Church, 312 Sir Donald Bradman Drive, Brooklyn Park SA 5032.
10am to 4pm, doors open at 9am.

Presenters: Bronwen Sayers, Wendy Hunt, Jackie Harris

Shops:  

Demonstrations:
Monique Reed and Gaylene Morgan – quilted postcards, Margaret Hurrell – binding magic, Carmel Loughry – Eppiflex English Paper Piecing, Di Bessell – playing card holders

Registration fee \$20 includes lunch, morning and afternoon tea and entry into lucky draw prizes.

Register early so you don't miss out.

Registrations will close on Sunday, 31st August 2025 (or when our limit is reached)

Contact:
Rosanne Fuller
Phone: 0432 483 263
Email: president.saquilters@gmail.com

Sponsors:
Office of Ageing Well
The Bobbin Tree

Save the Children Sit and Sew space

The Save the Children Op Shop on Port Road at Croydon has a crafting space that they are encouraging community groups to use which would be ideal for smaller groups to book for just a gold coin donation. The shop hopes to build a community 'feel' within the shop area and hope the groups that use their space interact with shoppers. SA Quilters have a booking on Saturday fortnightly and are really enjoying the facilities. Contact Deena: 0434 879 922 or Kelly: 0427 291 324 for more details.

I think that is all, I wish the groups having exhibitions all the best, hope those going to Quilt Encounter have a wonderful time and looking forward to seeing many of you at Country Forum.

Happy quilting everyone.

Rosanne

0432 483 263

President.saquilters@gmail.com