



41 Edwards Street  
South Brighton 5048  
South Australia  
+618 8377 5139  
0407609768  
siegle@internode.on.net



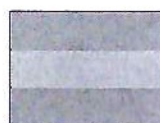
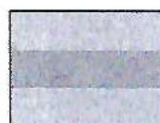
+61 408 824 428  
fayepackham3@gmail.com

### **CLAYTON'S SPLIT RECTANGLES** **approx.. 48" square**

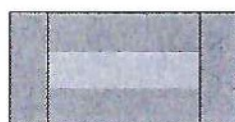
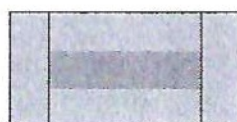
The fabric kit contains 14 light and 14 dark strips  $2\frac{1}{2}" \times 42"$  plus border fabric. From each  $2\frac{1}{2}"$  light and dark strip cut  $3 \times 9"$  and  $2 \times 6\frac{1}{2}"$  rectangles. The pattern requires 13 light and dark strips. There is an extra pair in case you need it.

If you use 14 strips the quilt will be just one row wider as in the photos without borders. *(for this kit the strips are already cut for you)*

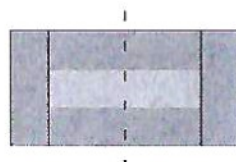
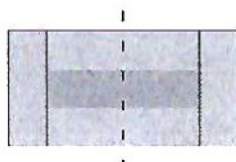
Using the  $9"$  strips sew together a light, dark and light strip and a  $9"$  dark light and dark strip. See diagrams.



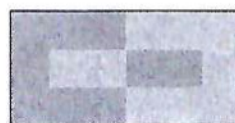
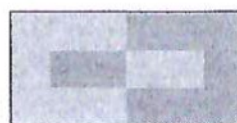
Add a  $6\frac{1}{2}"$  either light or dark to each end as shown in the diagrams below.

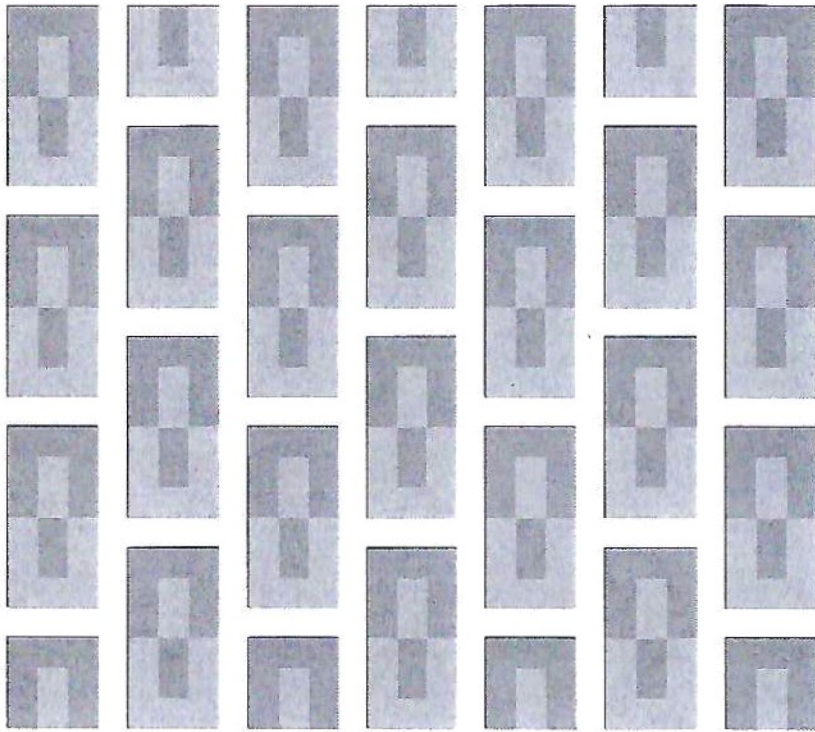


Cut the rectangles in half as shown in the diagram

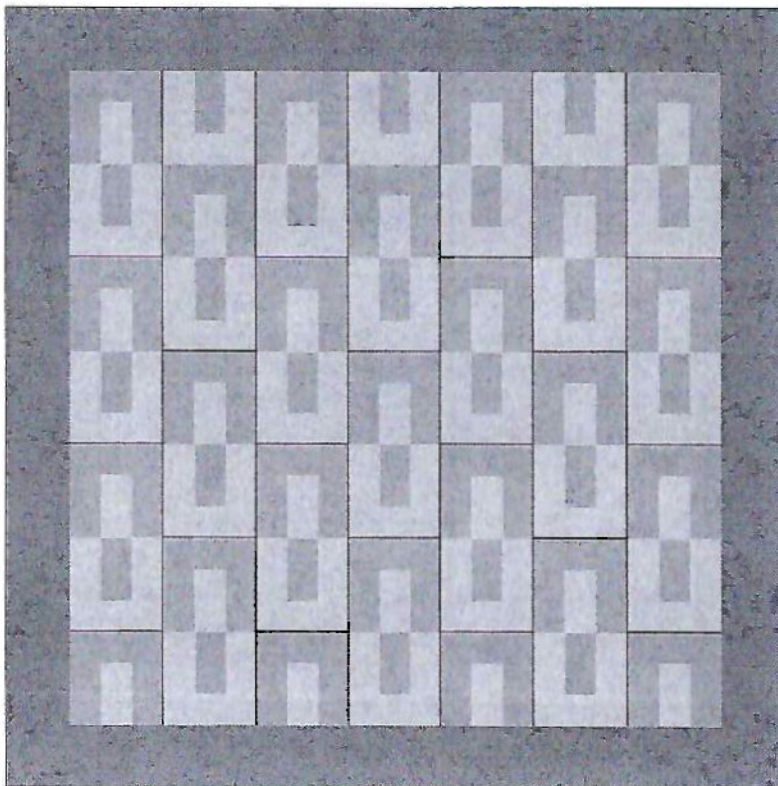


Arrange these half sections, alternating light to dark. They can be sewn back together using the same fabrics or they can be mixed so long as it is light and dark or different fabrics both across and down the quilt. Leave four blocks in half sections to begin and end alternate rows. See diagram on page 2. There will be a half block over.





Sew blocks together and then add borders



Money raised from the sale of kits will go to our Bedford project.

