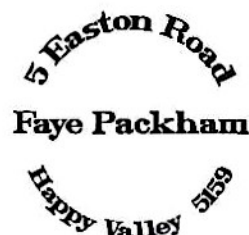




41 Edwards Street
South Brighton 5048
South Australia
+618 8377 5139

siegle@internode.on.net



+61 408 824 428
fayepackham3@gmail.com

CLAYTON'S SEW SQUARE QUILT VARIATION 50" SQUARE

The kit includes pre-cut pieces for 16 x 10" finished blocks plus trams and corner stones. A border could be added for a larger quilt. The quilt could be made using scraps of one colour or multi coloured scrap with either a light or dark background.

For each block

Contrast centre square $2\frac{1}{2}$ "

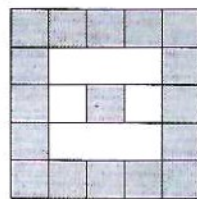
First round background fabric

2 x $2\frac{1}{2}$ " squares and 2 x $2\frac{1}{2}$ " x $6\frac{1}{2}$ " rectangles

Second round contrast fabric

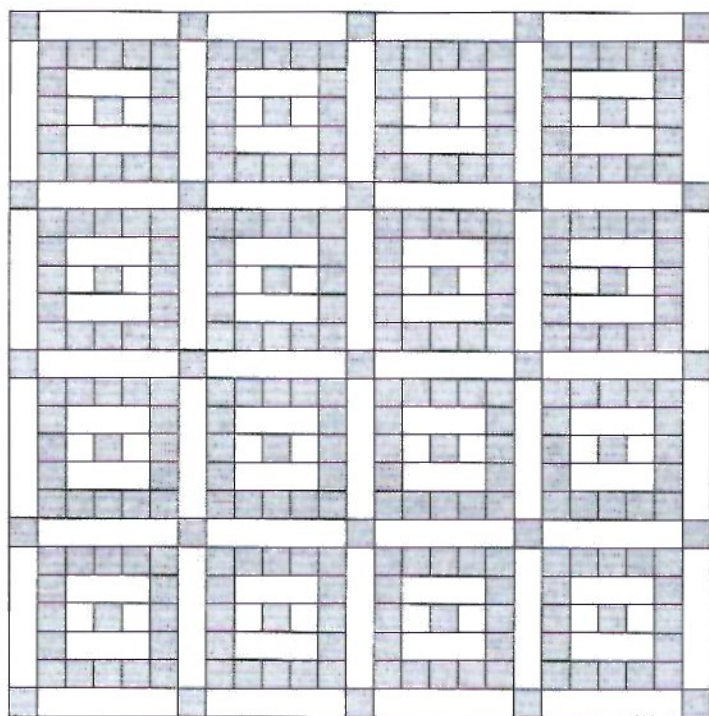
Join 3 x $2\frac{1}{2}$ " squares, make two – join to each side of centre square

Join 5 x $2\frac{1}{2}$ " squares make two – join to top and bottom



Using $2\frac{1}{2}$ " x $10\frac{1}{2}$ " background fabric join four blocks together – make 4 rows

Add $2\frac{1}{2}$ " contrast squares to $2\frac{1}{2}$ " x $10\frac{1}{2}$ " background rectangles to join rows together following the diagram below.



Money raised from the sale of kits will benefit Bedford.

