

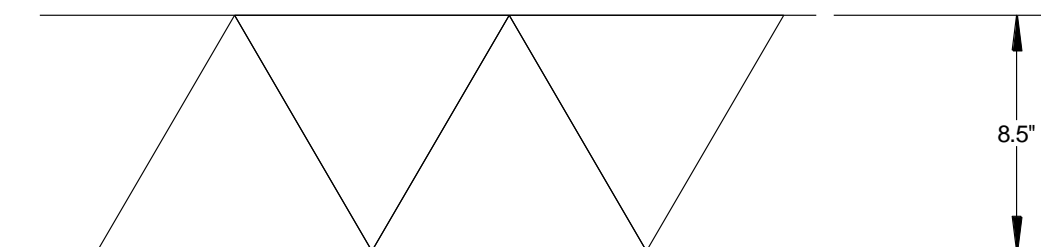


41 Edwards Street
 South Brighton 5048
 South Australia
 +618 8377 5139
 0407 609 768
 siegle@internode.on.net

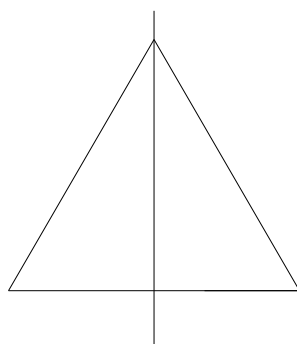
CLAYTON'S LANTERN QUILT approx. 48"

This quilt is made using 40 x 60 degree contrast triangles cut from 8½" strips and 40 pair of 60 degree background half triangles cut from 9" strips. The kit has a couple of spare triangles just in case. The triangles and half triangles are already cut for the kit but if you should wish to make this quilt again the templates are included. You can get 7 triangles per wof for both the 8½" and 9" strips. It can be made using many different fabrics, either in one colour or many colours.

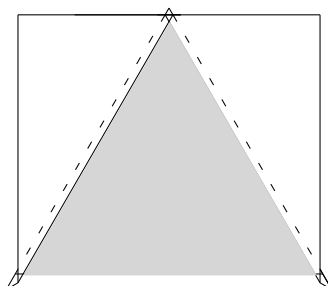
Cut the pieces as shown in the diagrams below.



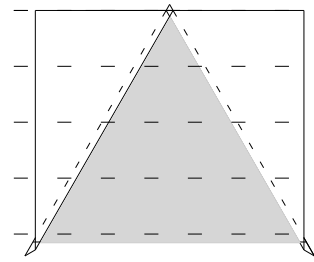
Cut the background 9" triangles down the centre as shown below.



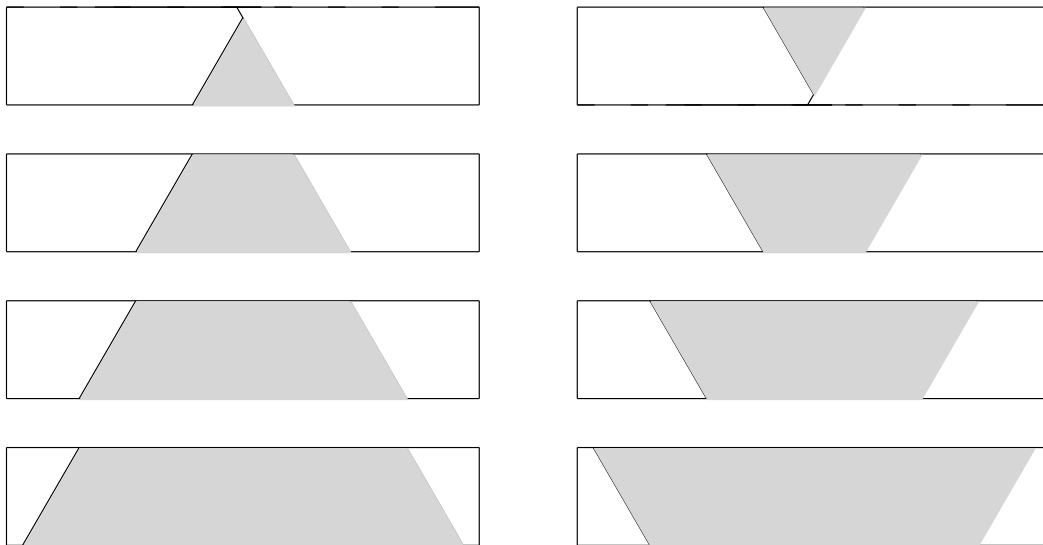
Sewing background half triangles each side of the contrast triangle. First sew one background half triangle to one side of the contrast triangle lining up the top of the triangle. You will notice at the other end there is a tail hanging over. Press to the background fabric away from the contrast triangle. Line up the second half triangle with the top triangle and sew. The seams should cross a ¼" above the contrast triangle. Sew all 40 triangle blocks.



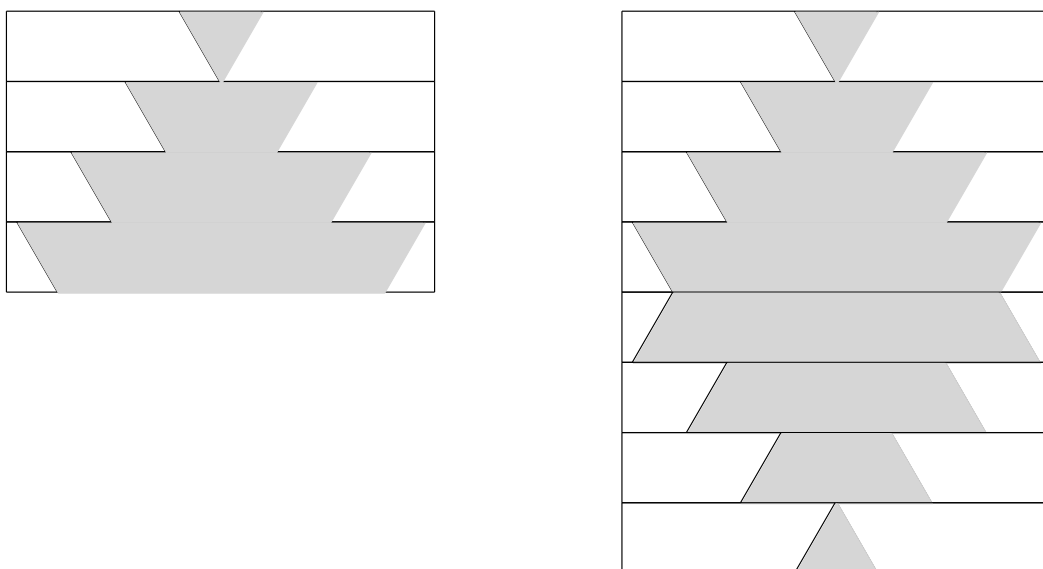
Starting from the top of the triangle block cut 4 x 2" strips from this block as shown in the diagram.



Next turn each of these pieces upside down and sew back together. Each lantern requires two reconstructed triangles.

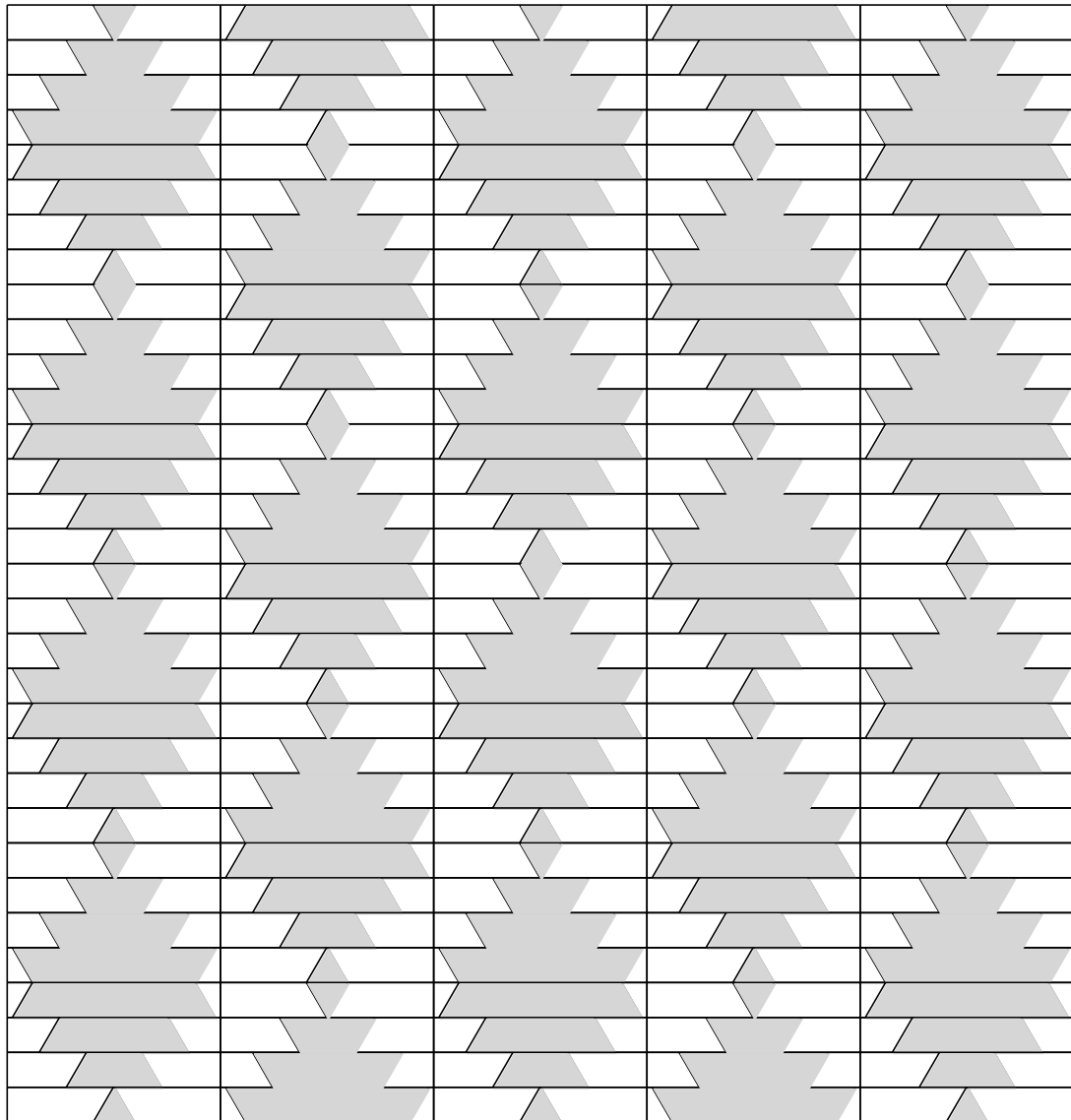


The sample quilt has 4 lanterns in the first row. Alternate rows start and finish with a half lantern. See diagram or photo.



When sewing the rows together be sure to match all the seams. It is a good idea to press all the seams on one row in one direction and all the seams in the next row in the opposite direction. This will keep everything lined up well.

Borders could be added for a larger quilt.



Money raised from the sale of kits will benefit Bedford.

Clayton's Lantern Quilt Template

8½" triangle for contrast fabric

Extend lines to complete triangle

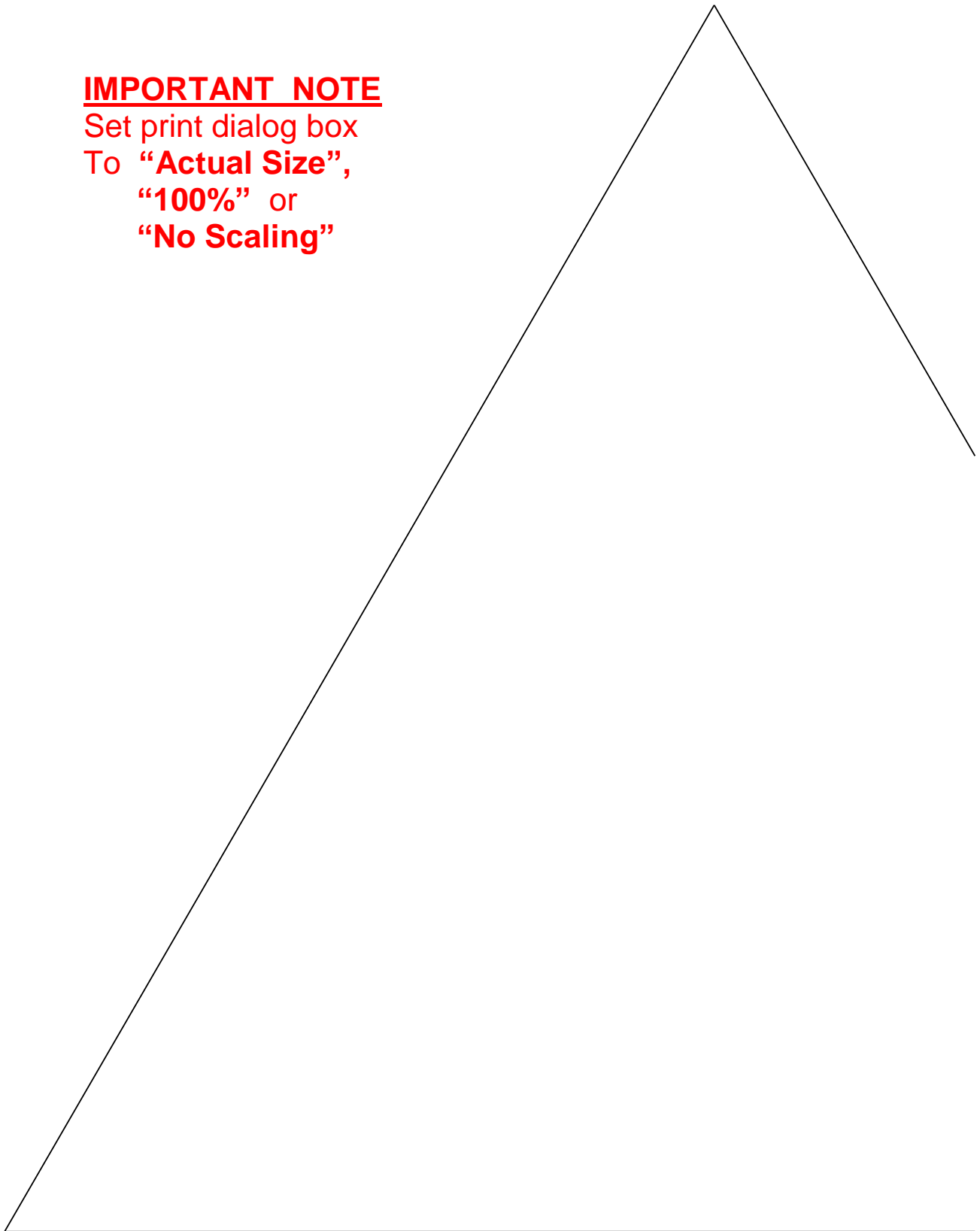
IMPORTANT NOTE

Set print dialog box

To **"Actual Size"**,

"100%" or

"No Scaling"



Clayton's Lantern Quilt Template

9" triangle for background fabric

Extend lines to complete triangle

IMPORTANT NOTE

Set print dialog box
To **"Actual Size"** ,
"100%" or
"No Scaling"

