

Quilters' Guild of South Australia, Inc.
WORKSHOPS 2012



MARY WILLIAMS - Saturday, 21 January & 4 February (2-day class)

Trip Around the World for Beginners

Begin your adventure in patchwork and quilting with this traditional Amish quilt.

The building blocks for this quilt are single squares, making it ideal for beginners. Learn the basics of colour selection; learn to use rotary cutting tools and learn easy construction techniques. When the quilt top is complete, learn how to baste the layers together, to master basic machine quilting then finish the quilt with the binding and label.

CODE: WS2101
VENUE: Adelaide West Uniting Church Hall.
PRICE: \$80



RACHELLE DENNENY - Saturday, 18 February (1-day class)
Saturday, 31 March (1-day class)

Machine Quilting

This class is for beginners or those who are stuck in stipple mode and would like to move beyond.

This class will cover the basics you need to know to get you started. We will touch on straight line and ditch stitching and we will discuss needles, threads, tension, basting and marking your quilt.

We will free draw, stitch a simple marked design and learn a variety of designs, some easy, some more challenging, depending on your skill level.

There will be lots of tips and notes for you to take home. Free-motion is not difficult to learn but it does take practice to become proficient.

I will have a small Show-and-Tell of some of my quilts.

CODE: WS 3103
VENUE: Fullarton Community Centre
PRICE: \$65



JULIE HADDRICK - Saturday & Sunday, 17-18 March (2-day class)

Colour That Cloth



Julie is a qualified and highly experienced teacher of Art, Design, Craft and Textiles who brings to teaching workshops the accumulated knowledge and experience of 30+ years of creative arts education. This month Julie invites you to Colour That Cloth. This two-day workshop is suitable for all skill levels, from beginner to advanced.

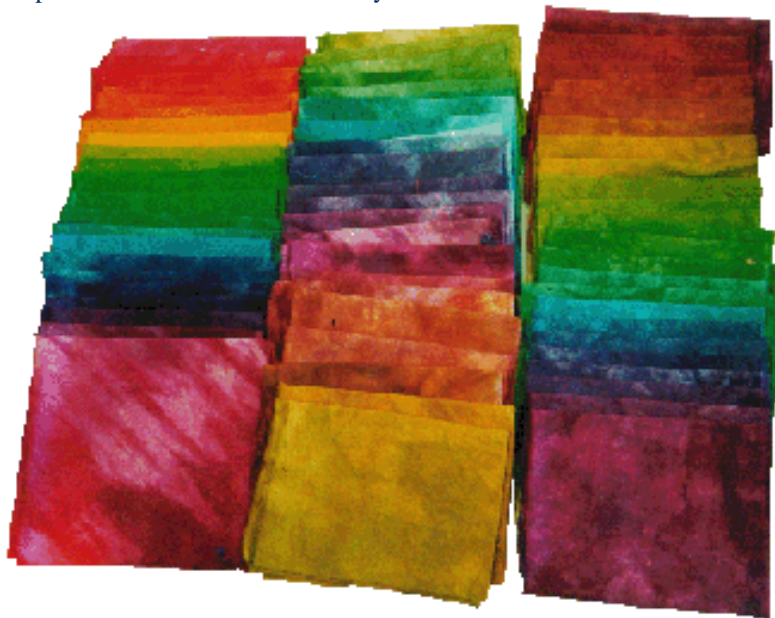
On Day 1 a rainbow palette of colours will be mixed and you can dye up to 24 fat quarters of cotton fabric. Each piece of fabric will make up part of a 24-hue colour spectrum range either in bright or muted tones. Day 2 'Colour That Cloth Creatively' will see all of you with a passion for fabrics, learn more about colour and make lots of fabric samples dyed in a variety of ways. Techniques involve direct dyeing and immersion dyeing, tie dye, shibori, polewrapping, tonal gradations, scrunching, over-dyeing and spray dyeing. Colour mixing and colour schemes will be covered and you could make fabric for a specific quilt project or try a variety of samples.

Students will dye 12 – 15 metres of white cotton fabric and will need to bring a variety of readily available materials. Julie supplies Procion Fibre reactive dyes for \$40.

CODE: WS1703

VENUE: Urrbrae Agricultural School. Netherby SA

PRICE: \$100 plus additional cost of \$40 for dyes



FAY WINTHER - Saturday & Sunday, 5-6 May (2-day class)

Curvy Strips with Fay



Fay Winther of In2Quilting in Victoria is going to teach a strip-piecing workshop that evolves into contemporary quilts using multitudes of fabric strips. From the strata that you create from your strip sets, you create the illusion of multiple circles or waves within the quilt. A lot of cutting can be done prior to the workshop if you wish. Once again this is a techniques workshop, which will individualise your quilt according to your selection of fabrics, colour choices and the blocks you choose to create your own quilt. Ideas for embellishing your work are also show in the workshop.

CODE: WS0505

VENUE: Fullarton Community Centre

PRICE: \$160

HEATHER FORD - Saturday, 16 June (1-day class)

Quilters' Carry Bag

A one-day class with some pre-class preparation.

Heather will be teaching us to make a Quilters' Carry Bag. The ultimate Quilters' Carry Bag is stiffened with corflute so your mat and rulers are protected. Take them all to class and store them in the bag at home. Hang the bag on a door handle or lean it against a cupboard.

Multiple pockets means you can store mats up to 23" x 17" and every ruler imaginable – square (from 20" - 4") long (24" x 6½") and short.

With two handles – (one over-the-shoulder and one short handle) it will be easy to carry.

CODE: WS1606

VENUE: Fullarton Community Centre

PRICE: \$65



KIM BRADLEY - Saturday & Sunday, 4-5 August (2-day class)

Domestic Machine Quilting and Fabric Colouring

Meet Kim Bradley from Sydney whose interests include hand-dyed fabric and the colour enhancement of quilts using Derwent Inktense pencils and other colour media, together with free-motion and other quilting techniques.

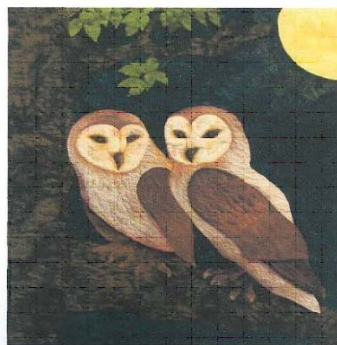
CODE: WS0408

VENUE: Fullarton Community Centre.

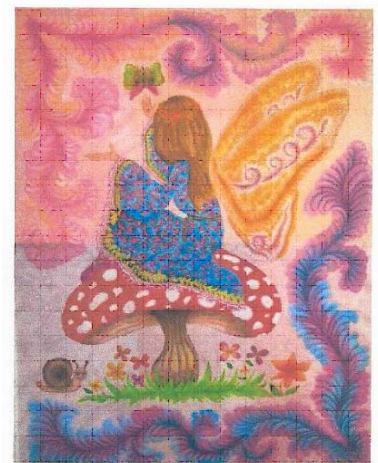
PRICE: \$160



"IT AINT EASY BEING GREEN"



"HOOT n ANNIE"



"FAIRY NUFF"

SALLY MACKENZIE Friday evening to Sunday, 24-26 August

Mystery Quilt Weekend Retreat

Why not say goodbye to the housework and the chores and come with us to the Mannum Motel, Mannum, for a weekend of relaxation, fun and laughter and take part in our Mystery Quilt weekend with Sally? We have booked 10 standard rooms, four family rooms, and the Barn. Share a room with a friend or take a standard room for yourself and relax.



This will be a fun quilt, suitable for all levels using up your scraps or a jelly roll. As long as you can sew a ¼" seam – you can do this.

THE REST IS A SECRET.....

CODE: WS2408

PRICE: Workshop \$90

VENUE: The Mannum Motel, Mannum

Rooms: Standard \$142 Family Shared \$93.50

Room Prices quoted are for two nights - Friday and Saturday night

LYN UPPILL Saturday & Sunday, 8-9 September (2-day Class)

Sashiko and Beyond

Sashiko is the country stitching of northern Japan. Sashiko means “little stab”.

Originally invented for warmth and thrifty recycling, strengthening work clothes and household goods, Sashiko combines country style with intricate designs – all made with a simple running stitch.

Lyn will teach you to stitch basic Sashiko the true Japanese way, and then you will learn hitomezashi and “chiku chiku” and explore other stitches.

During the workshop you will learn the history of Sashiko and experience many Japanese textiles and samples of Sashiko, both new and antique.

CODE: 0809

VENUE: Fullarton Community Centre.

PRICE: \$130

LYN UPPILL Saturday, 6 October (1-day class)

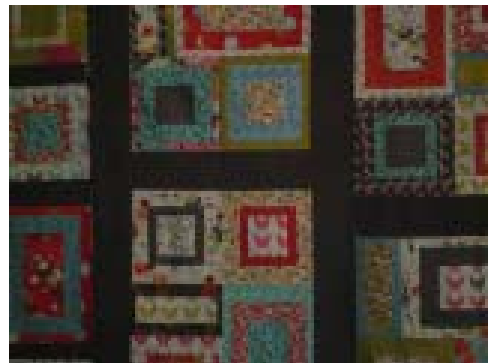
Modern-design Quilts using Modern Fabrics

We are pressed for time these days so what time is there to make a quilt? Join Lyn for the day and she will show you how to make a quilt in record-quick time using a bright, trendy jelly-roll, a layer cake, plus sashing.

CODE: 0610

VENUE: Fullarton Community Centre

PRICE: \$65



JULIE ADAMSON Saturday, 3 November (1-day class)

Needle Turn Applique

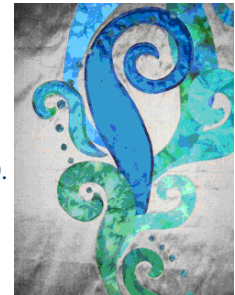
Come and join Julie as she teaches us how to create beautiful Needle Turn applique, her wonderful technique, which won her the Best in Show award at our Festival of Quilts in 2010.

As this is all handwork no sewing machine is required, just your basic sewing box. Julie will provide the rest for a wonderful day of stitching and relaxing amongst your friends.

CODE: 0311

VENUE: Fullarton Community Centre

PRICE: \$60 plus \$6 for the kit which Julie will provide on the day.



JULIE ADAMSON Sunday, 4 November (1-day class)

Hand Quilting

If you take a close look at the hand quilting on Julie’s award winning quilt “Tribute” which won Best in Show in our 2010 Festival, you can only be amazed at how precise and consistent the quilting stitches are.

Come along to this one day workshop when Julie will teach you how to hand quilt using the rocking and stabbing method. She will talk about the right fabrics, wadding and equipment to use, so that we can create beautiful stitches too – well, we can try, can’t we?

CODE: 0411

VENUE: Fullarton Community Centre

PRICE: \$60 plus \$6 for the kit which Julie will provide on the day.



PLEASE NOTE · A 20% non- refundable deposit is required at the time of booking.
· Associate members are charged an additional 10%.
· Non-Guild members are charged an additional 20%.

Workshop details will be provided upon full payment.

For all bookings and enquiries, please contact Workshop Convenor: Shirley Andrewartha

Phone: (08) 8443 3380

Email: shirl@aka.net.au