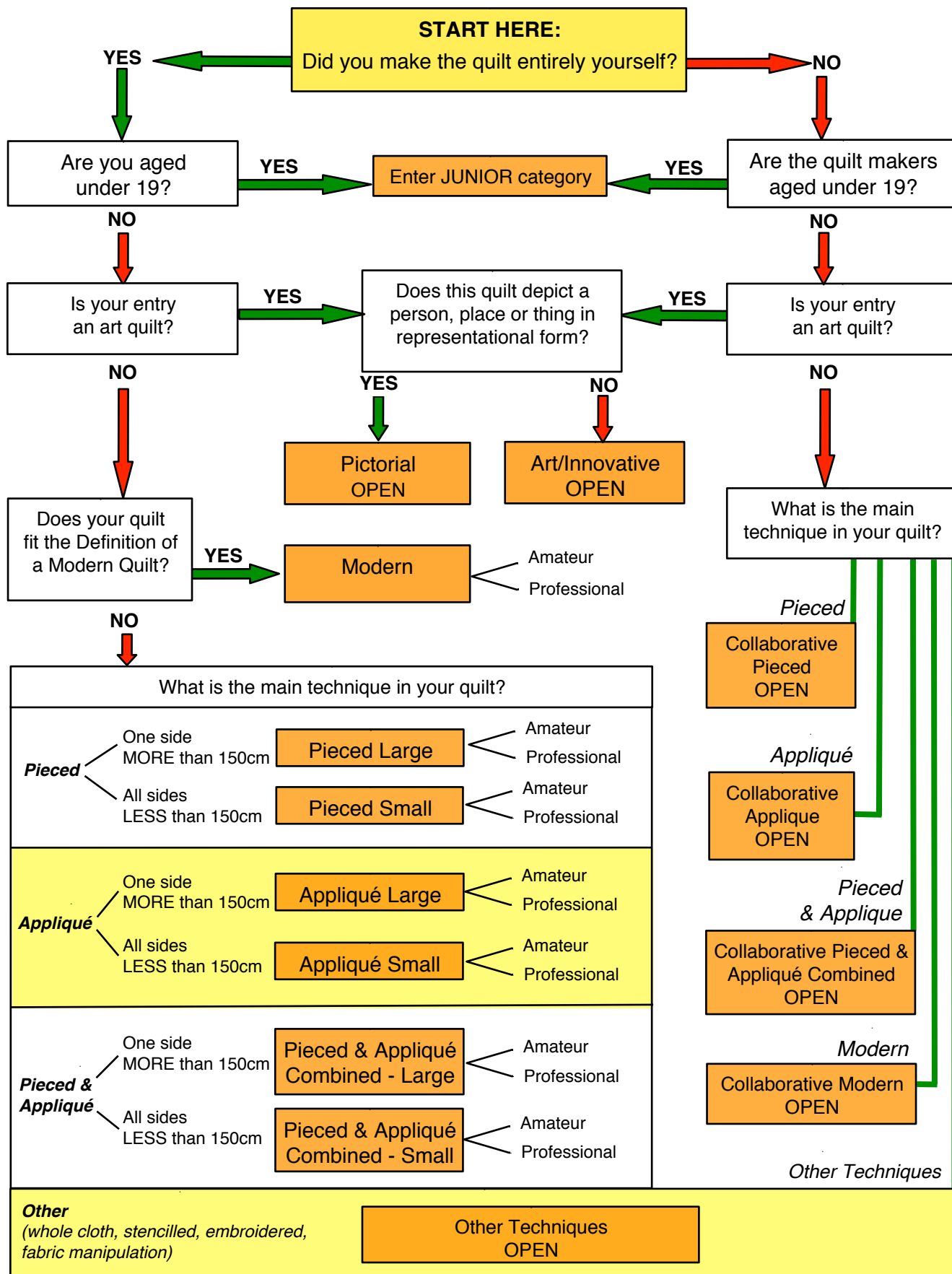




# Enter the 2019 Festival of Quilts!

This flow chart will help you choose the category to enter.  
(For definitions: please refer to the Guidelines document.)



## 2019 FESTIVAL OF QUILTS CATEGORIES

CATEGORY	STATUS		REQUIRED FEATURES OF THE ENTRY
Pieced – Large	A	P	For predominantly pieced quilts including traditional blocks, geometric, improvisational, foundation and English paper piecing, hand and/or machine pieced and quilted. <i>No side to exceed 290cm</i>
Pieced – Small	A	P	For predominantly pieced quilts including traditional blocks, geometric, improvisational, foundation and English paper piecing, hand and/or machine pieced and quilted. <i>No side to exceed 150cm</i>
Appliqué – Large	A	P	Predominantly hand or machine appliqué, with no minimum requirement for the extent of coverage of the quilt top by appliqué. <i>No side to exceed 290cm</i>
Appliqué – Small	A	P	Predominantly hand or machine appliqué, with no minimum requirement for the extent of coverage of the quilt top by appliqué. <i>No side to exceed 150cm</i>
Pieced and Appliqué (Combined) – Large	A	P	Quilts using a combination of piecing and appliqué. <i>No side to exceed 290cm</i>
Pieced and Appliqué (Combined) – Small	A	P	Quilts using a combination of piecing and appliqué. <i>No side to exceed 150cm</i>
Modern	A	P	Must feature one or more of the following characteristics: bold colours and prints, high contrast and areas of solid colour, minimalism, improvisational piecing, expansive negative space, reinterpreted traditional design, non-traditional layouts and asymmetry. <i>No side to exceed 290cm</i>
Collaborative – Modern	OPEN		
Collaborative – Pieced	OPEN		Collaboration by two or more people. For predominantly pieced quilts including traditional blocks, geometric, improvisational, foundation and English paper piecing, hand and/or machine pieced and quilted. <i>No side to exceed 290cm</i>
Collaborative – Appliqué	OPEN		Collaboration by two or more people. Predominantly hand or machine appliqué, with no minimum requirement for the extent of coverage of the quilt top by appliqué. <i>No side to exceed 290cm</i>
Collaborative – Pieced and Appliqué (Combined)	OPEN		Collaboration by two or more people. Quilts using a combination of piecing and appliqué. <i>No side to exceed 290cm</i>
Other Techniques	OPEN		For example whole cloth, trapunto, stencilling, embroidery, fabric manipulation. Can be a collaborative work. <i>No side to exceed 290cm</i>
Art/Innovative	OPEN		An original design. Made as an expression of art: should be an original, non-traditional design reflecting innovative construction and design techniques, theme or subject matter and/or materials, eg. painting, printmaking, photography, graphic design, dyeing, textile designs, beads, crayons, embellishments, embroidery, lace and fibres. Must be made of fabric, have 3 layers and incorporate quilting. Can be a collaborative work. <i>No side to exceed 290cm</i>
Pictorial	OPEN		An original design portraying a recognisable person, place or thing. Can be a collaborative work. <i>No side to exceed 290cm</i>
Junior	OPEN		Any technique created by a Junior up to 18 years. Please refer to Conditions of Entry # 1 and # 4 for requirements. <i>No side to exceed 290cm</i>
Challenge: <b>Tropical Vibes</b>	OPEN		Any technique inspired by and created to fit the theme. Must be made of fabric, have 3 layers and contain quilting but can be embellished or enhanced with other materials. <i>No side to exceed 100cm</i>

**A = Amateur**

**P = Professional**

*The Festival of Quilts Committee reserves the right to make modifications in any particular category prior to judging.*