

## EXTRA LARGE AND LARGE QUILT CARRY BAG

Notes by Heather Ford

I made my sample quilt bags from rubber backed soft furnishing fabric, \$16-00 per metre from Tricia's so very cost effective and it means no seam finishes are necessary and the bag is water proof. If you have a dual feed option on your machine engage it or you may wish to use a walking foot where possible, to feed the rubber backed fabric through evenly. Quilt binding clips instead of pins may be useful.

$\frac{1}{4}$ " seam allowance unless otherwise stated.

Extra-large bag measures 26" x 26" x 8"

Large bag measures 23" x 23" x 6"

### REQUIREMENTS LIST

Ex-large bag 1.70m of 1.30m wide fabric

Large bag 1.10m of 1.50m wide fabric

2 x 24" open end zips (not the chunky ones)



Size 14 jeans or topstitch needle (if using rubber backed fabric)

5" x 4" clear plastic for pocket

Thread and usual sewing stuff.

CUTTING (cutting instructions for large bag appear in red)

I drew on the fabric with pen and cut my pieces with scissors

2 x ( $26\frac{1}{2}$ " x  $26\frac{1}{2}$ " ( $23\frac{1}{2}$ " x  $23\frac{1}{2}$ " in red)) squares for front and back of bag

1 x ( $26\frac{1}{2}$ " x  $8\frac{1}{2}$ " ( $23\frac{1}{2}$ " x  $6\frac{1}{2}$ " in red)) rectangle for gusset base

2 x (4" x 24") (4" x 20" in red) for handles

2 x (5" x 41") (4" x 41" in red) for top and upper sides of gusset to enclose zip

2 x ( $8\frac{1}{2}$ " x  $19\frac{3}{4}$ " ( $6\frac{1}{2}$ " x  $15\frac{1}{4}$ " in red)) lower sides of gusset

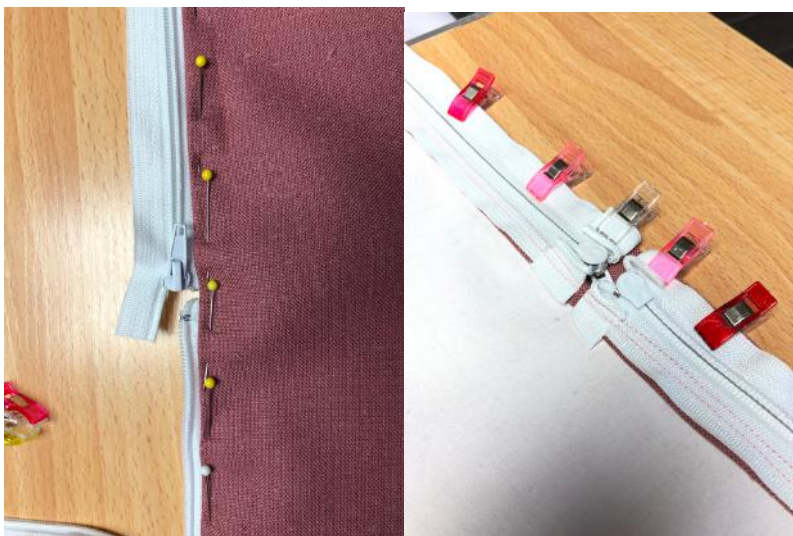
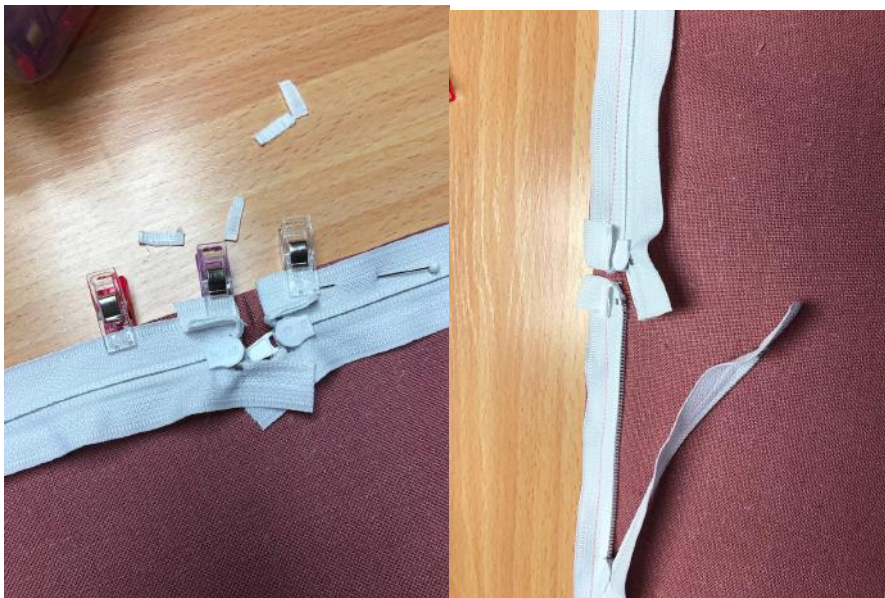
1 x (8" x 9") (6" x 8" in red) for pocket

1 x (5" x 4") (5" x 4" in red) clear plastic for pocket

## CONSTRUCTION OF THE BAGS IS THE SAME FOR BOTH SIZES

### 1. The top section of the gusset including putting in the zip.

Mark the centre of both long edges of the 41" gusset piece. Pin one zip right sides together with the gusset piece, with the top of the zip starting at the marked point, the tail end of the zip will extend beyond the end of the gusset piece. Pin the second zip in place as shown below, the start of the zip abutting the start of the first zip. Fold the tops of the zips over and out of the way of the teeth. Using your zipper foot, stitch the zips in place along the whole 41" side. Open the zips as required as you sew. Top stitch the seam allowance and the zip tape to the bag. Repeat with the second side 41" gusset piece.



The upper gusset will look like this.



With the zips closed over stitch through the teeth of the zip close to the end of the gusset and then trim off the excess zip. Trim the width of the gusset piece back to  $8\frac{1}{2}$ " ( $6\frac{1}{2}$ "). I deliberately made the gusset wider so it didn't matter what size seam allowance I used when attaching the zip.



## 2. Complete construction of the gusset

Join a lower gusset section to both narrow ends of the 41" gusset piece using a  $\frac{1}{2}$ " seam allowance. Fold the seam allowance away from the zip and stitch the seam allowance to the gusset. Top stitch as well for extra strength, as shown below. Fig 1 and 2

Then attach the base of the gusset to each end of the upper gusset using a  $\frac{1}{4}$ " seam allowance. Start and stop the seam  $\frac{1}{4}$ " from the outer edge.

Backstitch to secure the seam. Fig 3

The gusset will now be a large cylinder.



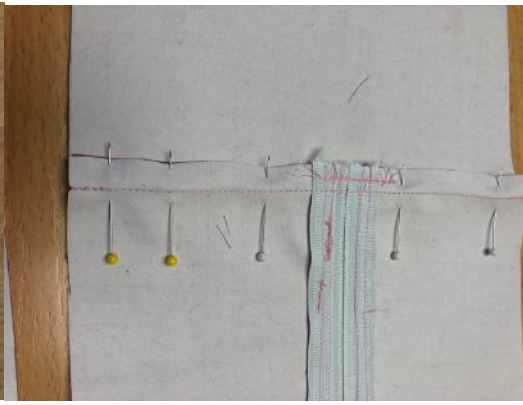


Fig 1

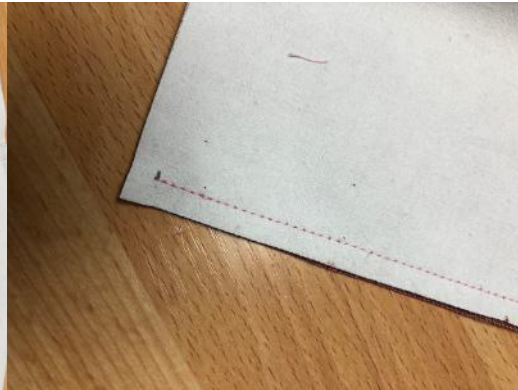


Fig 2

Fig 3

### 3. Handles

Fold one long edge in 1" and press well. Fold the second edge over to encase the first raw edge so that the handle is roughly  $1\frac{1}{2}$ " wide.



Stitch along both outer edges of the handle to secure the raw edge and twice down the centre of the handle. The rows of stitching make the handle secure and give it extra strength. Set aside the handles.

#### 4. Pockets

Fold 1" of one the 9" (8") sides of the pocket to the wrong side and press well, this is the top of the pocket. Stitch the flap in place and top stitch along the top edge of the pocket for extra strength.



Pin the pocket to the lower left hand corner of the front of the bag 4" in from the side and 4" up from the bottom. Stitch in place with two rows of stitching.





Pin the clear plastic pocket in place 4" down from the top of the bag and 4" in from the right hand side. Stitch in place using two rows of stitching as before. I extended the stitching beyond the top of the pocket for extra strength.



5. Attach the front and back of bag to the gusset

Mark the mid-point of the base of the gusset and the top section of the gusset and the sides of the gusset.



Mark the mid-point of the top, base and sides of the front of the bag. Pin the front of the bag and the gusset right sides together, matching the mid-points and making sure the front is facing the right way up. Start pinning from the mid-points making your way out to the corners of the bag. At the top two corners clip the curve of the gusset so it sits well. Stitch the base of the bag first. Back stitch at each end of the seam. Then stitch up one side across the top and down the second side, pivot at the top corners and back stitch at the start and end of the seams. Stitch with the front of the bag on the bottom so you can deal with the fullness of the gusset at the corners.



Repeat this process with the back of the bag. *OPEN THE ZIP PART WAY FIRST.*

Zig zag (with a 3 x 3 size stitch) all the seam allowances. Seam finishes are not really necessary with rubber backed fabric but zig zag will support the seams and give them extra strength.

#### 6. Attach the handles

Find the mid-point of the top of the bag front, measure 4" (3") to either side of this point, and 2" down from the top of the bag. Pin the handles in place and stitch using a gate effect for extra strength. Repeat with the second handle on the back of the bag.





You have now completed your quilt carry bag

Heather Ford

0438 272 408

[heathf@chariot.net.au](mailto:heathf@chariot.net.au)