

Basting

Lay out the backing right side down on a large flat surface, tape the edges taut and square. Centre the batting over the backing and smooth out any wrinkles. Centre the quilt top right side up on the batting and smooth out any wrinkles as you go. Baste the three layers together with your preferred method.

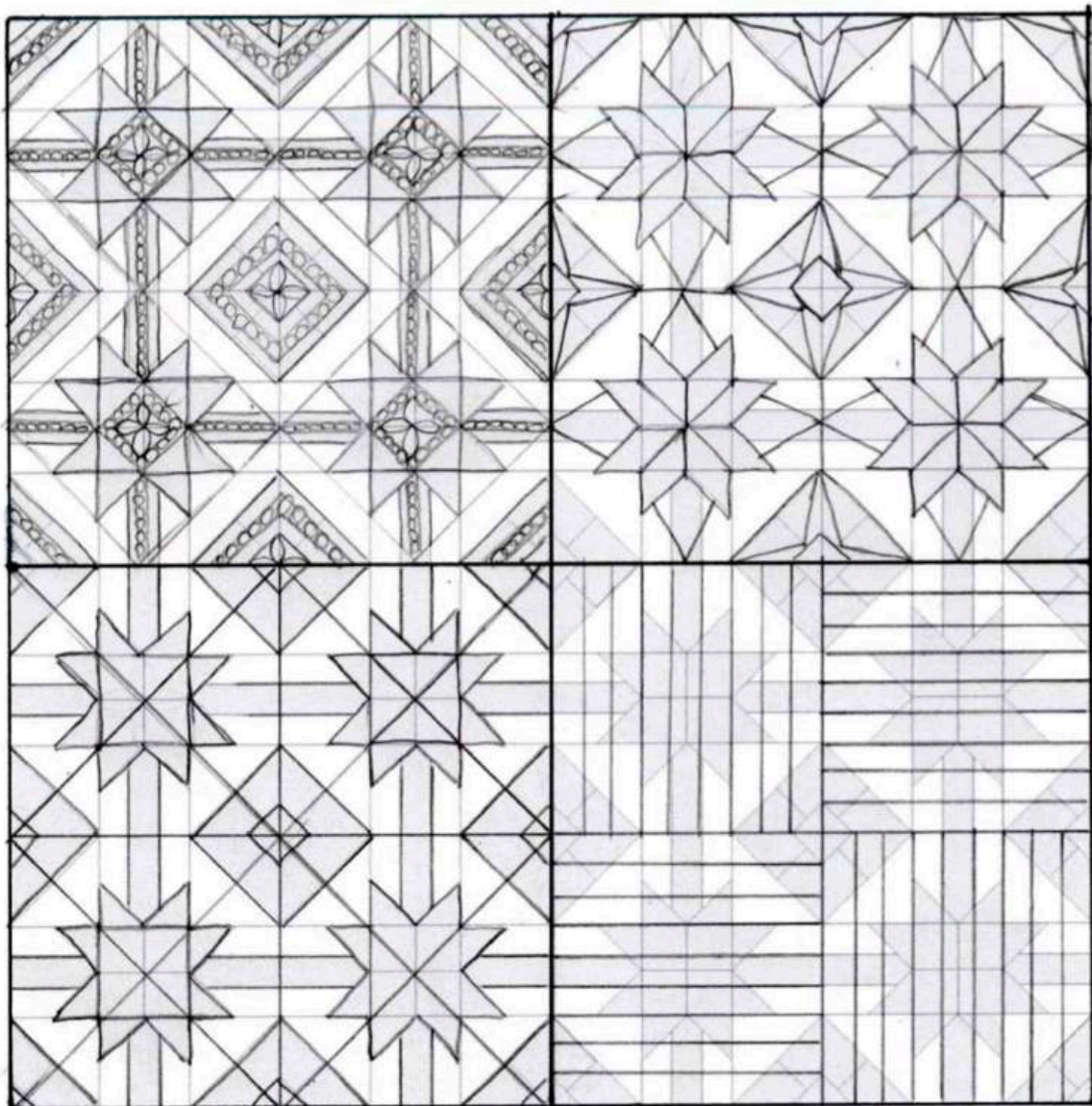
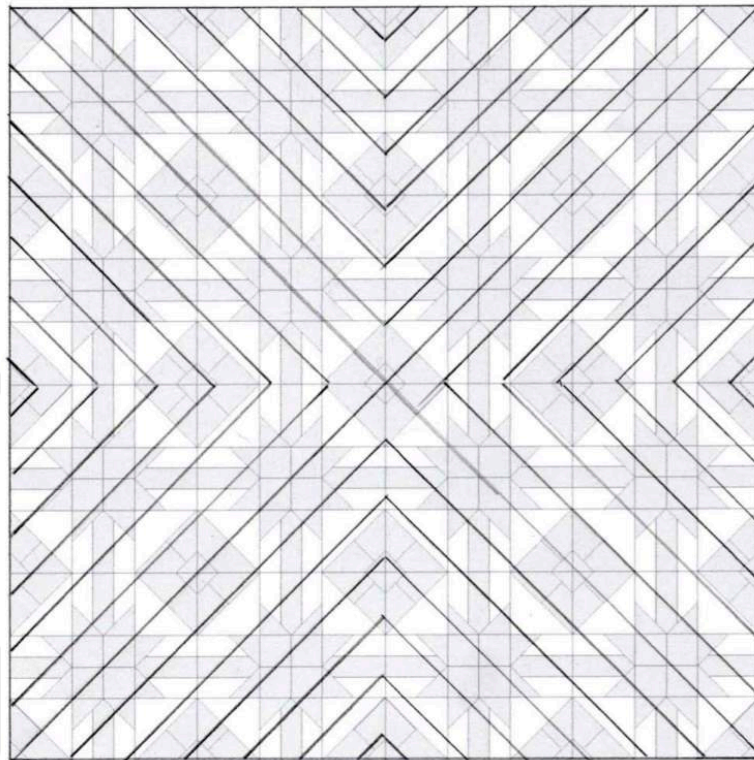
Quilting Suggestions

The diagrams on the next few pages give you four options for each Block layout and four simpler all over designs that could work for any of the layouts. The diagrams show you one quarter of the quilt to then be repeated in the other three quarters. Some of the designs are fairly simple and other more complex then can also be mixed and matched to suit your preference or skill level.

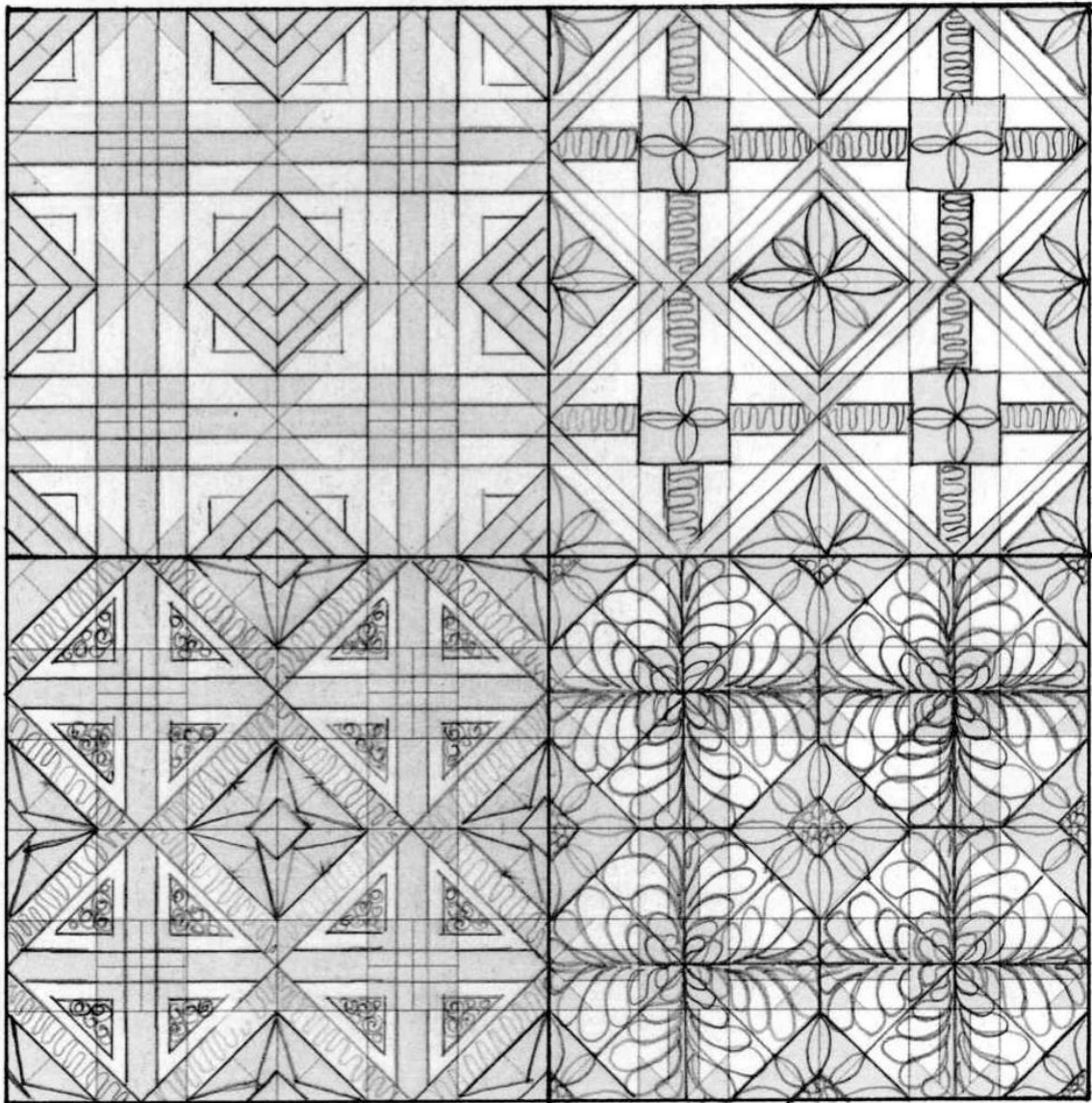
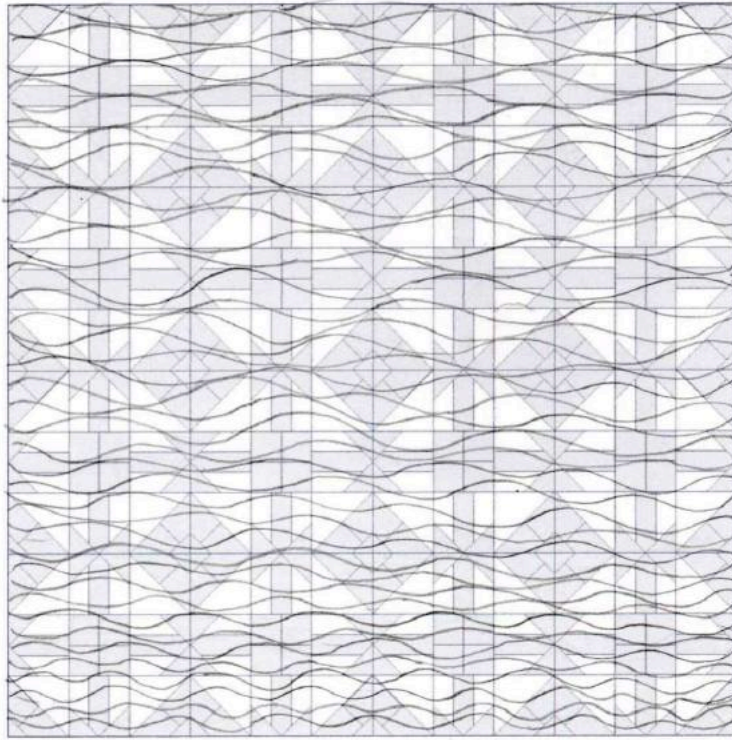
Binding

1. Join the required amount of 2 ½” binding strips end to end with 45-degree seams.
2. Trim the seams and press them open then press the binding in half lengthwise with wrong sides facing.
3. Beginning about halfway along one side, join the binding to the edge of the quilt, mitre each corner as you go. Trim the batting and backing ¼” from the edge of the quilt top. Then turn the folded edge of the binding to the back of the quilt and hand-stitch it in place.
4. Label the quilt with your name and the completion date.

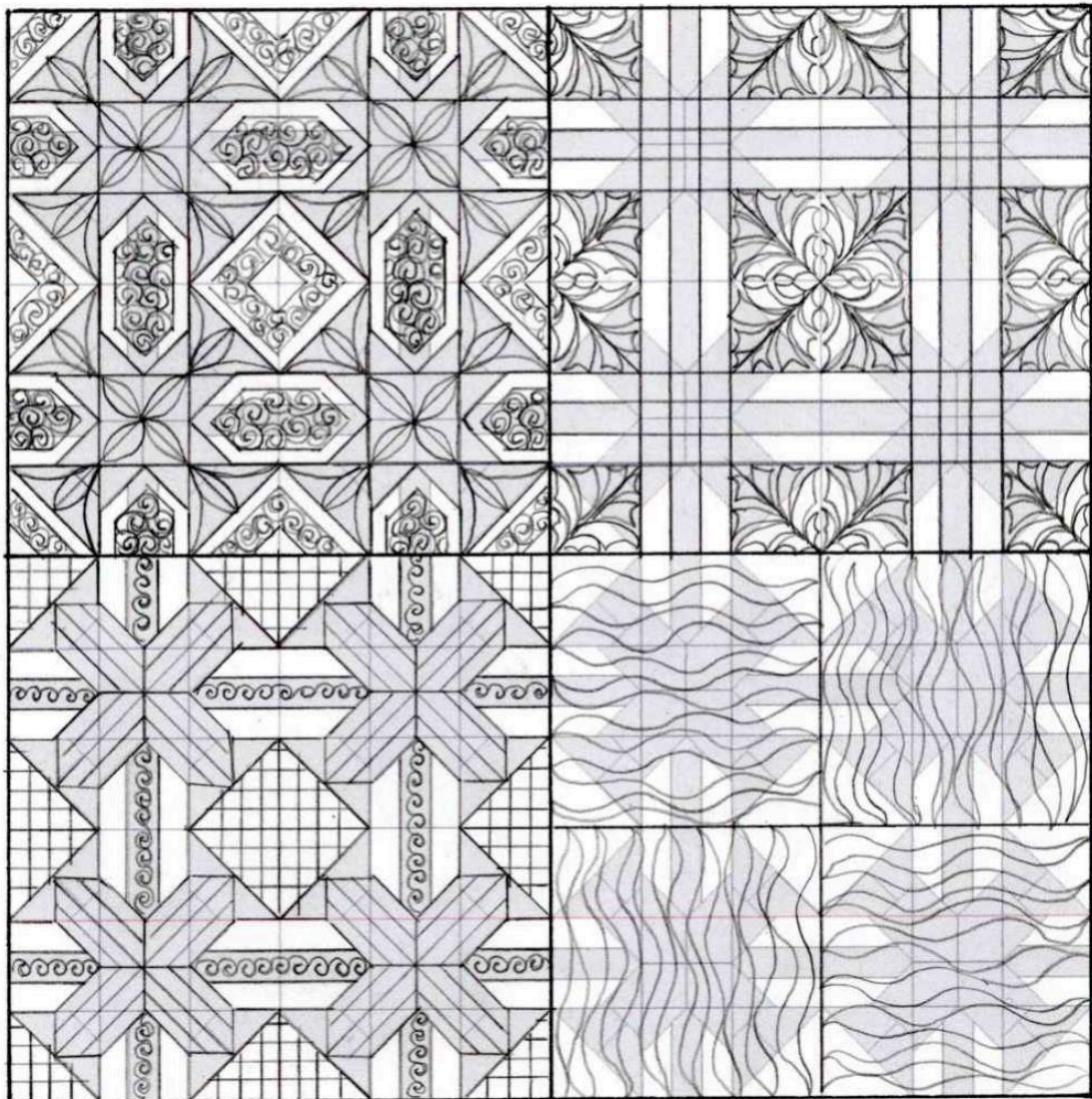
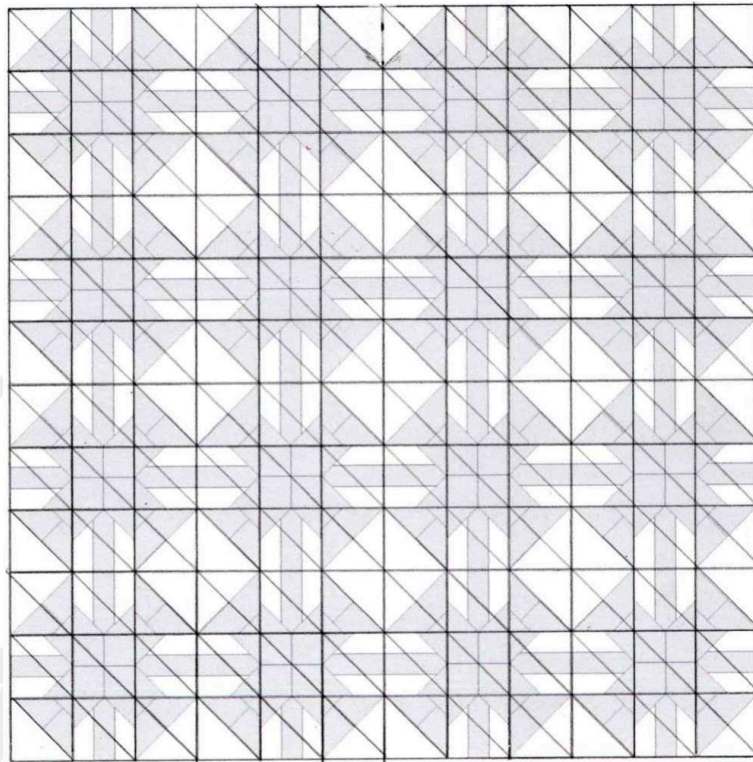
Block 1. Layout



Block 2. Layout



Block 3. Layout



Block 4. Layout

